



**Disconnecter Switch**



**Disconnecter Switch Porcelain Type**

Model No.	Rated Voltage (kV)	Rated Current (A)	Limit Passing Current(kA)		10-Second Heat Stabilization Current (kA)
			Peak Value	r.m.s	
SW1-12	12	400	21	15	10
SW1-15	15	600	35	25	14



**Disconnecter Switch Polymer Type**

Model No.	Rated Voltage (kV)	Rated Current (A)	Limit Passing Current(kA)		10-Second Heat Stabilization Current (kA)
			Peak Value	r.m.s	
SW2-12	12	400	21	15	10
SW2-15	15	600	35	25	14



**Disconnecter Switch Polymer Type**

Model No.	Rated Voltage (kV)	Leakage Distance (mm)	Impulse Withstand Voltage (kV)	Dry power-Frequency Withstand Voltage (kV)	Wet power-Frequency Withstand Voltage (kV)	Tensile Load (kN)	Weight (kg)
SJC-50	24	673	150	68	50	25	5.5
	36	750	170	102	75	25	6.2



**Disconnecter Switch Porcelain Type**

Model No.	Rated Voltage (kV)	Rated Current (A)	Limit Passing Current (kA)		10-Second Heat Stabilization Current (kA)
			Peak Value	r.m.s	
GW9-10W	10	200/400/600	5	9	5
GW9-12W	12	200/400/600	21	15	10
GW9-15W	15	200/400/600	35	25	14

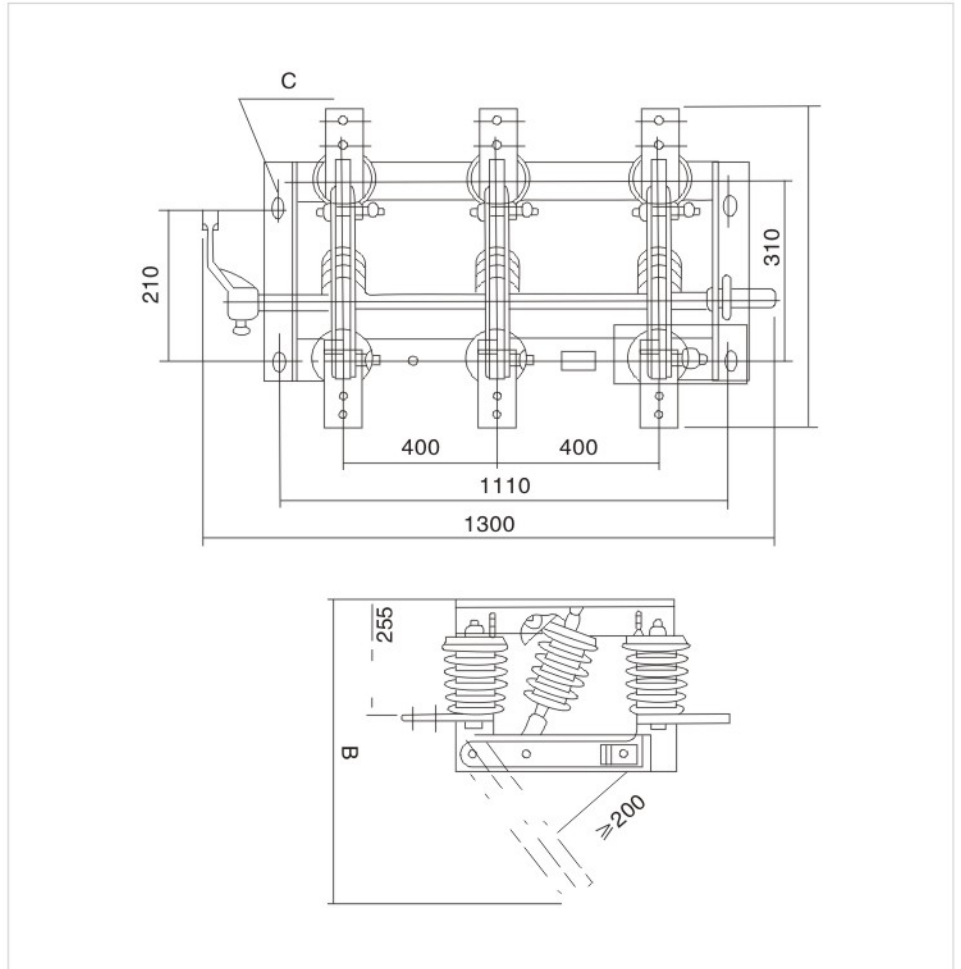


**Knife Blade Switch Polymer Type**

Model No.	Rated Voltage (V)	Rated Current (A)
LVKS-415	415	250



**Disconnecter Switch GW1**



Model No.	A	B	C
GW1-12G/400A	510	555	18 × 24=4
GW1-12G/630A	530	555	

