



**Eye Nuts**

Model No.	Dimension	Weight (kg)
SEN16	M16	0.192
SEN20	M20	0.360



**Socket Tongue Adaptors**

Model No.	Designated Size Of Coupling	Rated Failure Load (kN)	Weight (kg)
W-7	16	70	0.8
W-12	16	120	1.3



**Socket Clevis Adaptors**

Model No.	Designated Size Of Coupling	Rated Failure Load (kN)	Weight (kg)
WS-7	16	70	0.97
WS-12	20	120	3.81



**Ball Eye**

Model No.	Designated Size Of Coupling	Rated Failure Load (kN)	Weight (kg)
QH-7	16	70	0.6
QH-10	16	100	0.6



**U-Shackle**

Model No.	Rated Failure Load (kN)	Weight (kg)
U-7	70	0.50
U-10	100	0.60
U-12	120	1.00



**D-Shackle Straight Pin Type**

Model No.	Failing Load (kN)	Weight (kg)
SJ70-D	70	0.460



**Ball Clevis**

Model No.	Material	Failing Load (kN)	Weight
OSH-005	Hot Dip Galvanized Steel	120	≈ 1.17



**Socket Clevis**

Model No.	Material	Failing Load (kN)	Weight
OSH-006	Hot Dip Galvanized Steel	120	≈ 1.68



**Double Tongue**

Model No.	Material	Failing Load (kN)	Weight
OSH-015	Hot Dip Galvanized Steel	160	≈ 0.80



**Guy Clip**

Model No.	Steel Wire Dia(mm)	Material	Weight (kg)
JK-1(10)	6.6-8.0	Hot Dip Galvanized Steel	0.151
JK-2(12)	9.0-11.5	Hot Dip Galvanized Steel	0.222
JK-3(15)	12.5-14.0	Hot Dip Galvanized Steel	0.356



**Socket Tongue Twisted**

Model No.	Material	Failing Load (kN)	Weight
OSH-019	Drop Forged Steel	120	≈ 1.34



**Ball Tongue**

Model No.	Material	Failing Load (kN)	Weight
OSH-008	Hot Dip Galvanized Steel	130	≈ 1.03



**Pigtail Ball Hook**

Model No.	Material	Failing Load (kN)	Weight (kg)
	Hot Dip Galvanized Steel		



**Question Mark Bracket**

Model No.	Material	Failing Load (kN)	Weight
D-DT3086	Hot Dip Galvanized Steel		



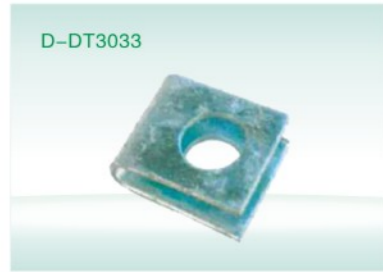
**Stay Strap**

Model No.	Material	Failing Load (kN)	Weight (kg)
D-DT3032	Hot Dip Galvanized Steel		



**Pole Top Bracket**

Model No.	Material	Failing Load (kN)	Weight (kg)
D-DT3046	Hot Dip Galvanized Steel		



**Bonding Clip**

Model No.	Material	Failing Load (kN)	Weight (kg)
D-DT3033	Hot Dip Galvanized Steel		



**Thimble**

Model No.	Material	Failing Load (kN)	Weight (kg)
D-DT3026	Hot Dip Galvanized Steel		



**Insulation Wedge Tension Clamp**

Model No.	Conductor (mm <sup>2</sup> )	U.T.S (kN)
CSJ-16	16	1.7
CSJ-25	25	2.5
CSJ-35	35	3.4
CSJ-50	50	4.6
CSJ-70	70	6.8



**NUT, NU Wedge Clamps (Adjustable Type)**

Model No.	Steel Strand Wire O.D (mm)	Failing Load (kN)
NUT-1A	φ 6.6-7.8	45
NUT-2A	φ 9.0-11.0	88
NUT-3A	φ 13.0-14.0	143



**Wire Rope Thimble**

Model No.	Designated Size Of Coupling
ST-35	25, 35
ST-70	50, 70



**Adjustable Stay Rods & Base plate**

Model No.	Stay Rod Size	Base Plate Size (mm)
ASRP-1	M16 x 1.8m adj.	300 x 300 x 5
ASRP-2	M20 x 2.4m adj.	450 x 450 x 5



**Adjustable Stay Rods**

Model No.	Stay Rod Size	Material
ASR-1	M16 x 2.4m	HD Galv. Steel
ASR-2	M20 x 2.4m	



**Non-Adjustable Stay Rods**

Model No.	Stay Rod Size	Weight(kg)
NASR-1	M12 x 1.5m	4.54
NASR-2	M20 x 2.0m	8.92





**Suspension Clamps**

Model No.	Applicable Strand Wire Diameter Range(mm)	U-Bolt	Nuts	Washer Spring	Failing Load (kN)
SJSC8-18	8-18	2 x M12	4 x M12	4	40



**Suspension Clamps(Aluminium-Alloy, Portable Type)**

Model No.	(Applicable Strand Wire Diameter) (mm)	Failing Load (kN)	Weight (kg)
CGH-3	12.4-17.0	40	1.5
CGH-4	19.0-21.6	40	2.2
CGH-5	24.2-28.0	60	2.8



**Thimble**

Model No.	Failing Load (kN)	Weight (kg)
SJCAB-100	70	0.44



**Thimble**

Model No.	Failing Load (kN)	Weight (kg)
TC 12	120	0.9



**Thimble Clevis**

Model No.	Material	Failing Load (kN)	Weight (kg)
STC-120	Hot Dip Galvanized Steel	120	1.017



**Thimble**

Model No.	Failing Load (kN)	Weight (kg)
TC 07	70	0.9



**Ball Hooks**

Model No.	Rated Failure Load (kN)
SJ-7H	70



**Ball Eye**

Model No.	Rated Failure Load (kN)
Q-7	70



**Clevis Ball Adaptors**

Model No.	Designated Size Of Coupling	Rated Failure Load (kN)	Weight (kg)
Q-7U	16	70	0.9



**Thimble Socket**

Model No.	Failing Load (kN)	Weight (kg)
SJTS70	70	1.16



**Ball Eye With Bolt**

Model No.	Test Load (kN)	Bolt
C20	70kN	M16



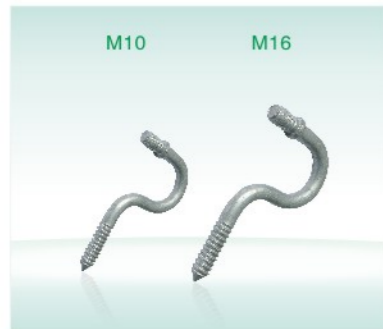
**U-Bolt**

Model No.	Rated Failure Load (kN)	Weight (kg)
U-1670	50	0.66



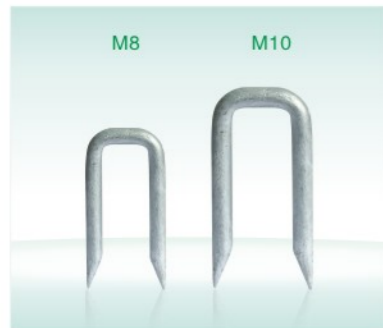
**Pigtail Bolts**

Model No.	Dimension (mm)
SJPB-1	M10 x 280
SJPB-2	M16 x 380



**Bend Bolts**

Model No.	Dimension (mm)
SBB-1	M10 x 180
SBB-2	M16 x 180



**U Bolts**

Model No.	Dimension (mm)
SUB-1	M8 x 80
SUB-2	M10 x 80



**Curved Washer**

Model No.	Hole	Dimension (mm)
SSW-1	1	65 x 65 x 5
SSW-2	2	65 x 65 x 5

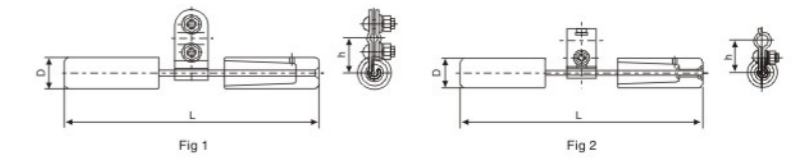


**Cross-arm For Line Post Insulator**

Model No.	Length (mm)	Thickness (mm)	Weight (kg)
SCA-1	1150	6	18
SCA-2	1600	6	30
SCA-3	2350	6	31
SCA-4	3000	6	42



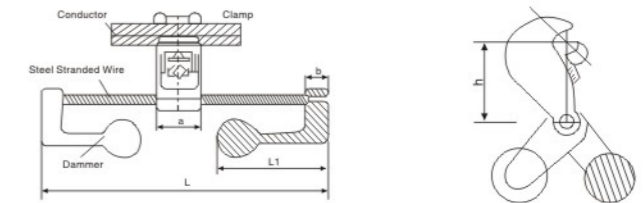
**FD Vibration Damper**



Model No.	Cross Section (mm <sup>2</sup> )		Fig	Dimensions (mm)			Weight (kg)
	Steel Wire	AAC & ACSR		L	D	h	
FD-1		35-50	1	300	40	40	1.5
FD-2		70-95	1	370	46	55	2.4
FD-3		120-150	1	450	56	65	4.5
FD-4		185-240	1	500	62	70	5.6
FD-5		300-400	1	550	67	70	7.2
FD-6		500-630	1	550	70	75	8.6
FG-35	35		2	300	42	50	1.8
FG-50	50		2	350	46	50	2.4



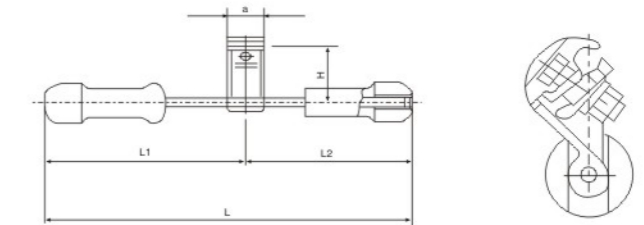
**FDZ Vibration Damper**



Model No.	Cross Section (mm <sup>2</sup> )	Dimensions (mm)					Weight (kg)
		D	A	H	L1	L2	
FDZ-1	35-50	50	33	51	120	320	1.8
FDZ-2	70-95	50	33	51	130	360	2.3
FDZ-3	120-150	55	42	63	151	450	4.2
FDZ-4	185-240	59	52	64	161.5	500	5.3
FDZ-5	300-400	60	61	87	180	550	6.5
FDZ-6	500-630	60	61	86	182	550	7.6



**FR Vibration Damper**



Model No.	Applicable Conductor	Dimensions (mm)				Weight (kg)
		L1	L2	H	a	
FR-1	7.0-12.0	239	190	80	50	2.6
FR-2	11.0-22.0	239	190	80	50	2.6
FR-3	18.0-28.0	280	225	90	60	4.97
FR-4	23.0-36.0	300	250	97	60	4.50





**Bolts**

Model No.	Diameter (mm)	Length (mm)
M12 x 200	M12	200
M12 x 250	M12	250
M12 x 300	M12	300
M16 x 200	M16	200
M16 x 250	M16	250
M16 x 300	M16	300
M20 x 200	M20	200
M20 x 250	M20	250
M20 x 300	M20	300



**Suspension Clamp for ADSS**

Model No.	Cable Diameter (mm)	Armor Rod (mm)	Anchor Shackle
ADSS-200-11.5	10.9-11.5	1080	U-7
ADSS-200-12.2	11.6-12.2	1080	U-7
ADSS-200-13.6	13.0-13.6	1080	U-7
ADSS-200-14.3	13.7-14.3	1080	U-7
ADSS-200-15.0	14.4-15.0	1080	U-7
ADSS-200-16.4	15.8-16.4	1080	U-7
ADSS-200-17.1	16.5-17.1	1080	U-7
ADSS-200-17.8	17.2-17.8	1080	U-7



**Line Taps Type (Copper Coated Tin)**

Model No.	Cond dia range(mm)	Slat width (mm)	Weight (kg)
SJLT-8	10	4.5	0.03
SJLT-6	16	6.0	0.03
SJLT-4	25	6.7	0.04
SJLT-2	35	8.3	0.06
SJLT-0	50	10.5	0.08
SJLT-3/0	70	11.0	0.14
SJLT-100	100	14.0	0.20
SJLT-120	120	15.0	0.21
SJLT-5/8	150	15.8	0.22
SJLT-3/4	185	19.0	0.30



**Transformer Lug**

Model No.	Conductor Size(mm)	Current Rating	Bolt Size
	6-15,24	350amps	M8



**Aerial Bundle Conductor Joints & Terminations**

Model No.		Color Code
MJPT 25	Preinsulated Ferrule	●
MJPT 35	Preinsulated Ferrule	●
MJPT 50	Preinsulated Ferrule	●
MJPT 54	Preinsulated Ferrule	●
MJPT 70	Preinsulated Ferrule	○
MJPT 95	Preinsulated Ferrule	●
CPTAU 25	Preinsulated Lug	●
CPTAU 35	Preinsulated Lug	●
CPTAU 50	Preinsulated Lug	●
CPTAU 54	Preinsulated Lug	●
CPTAU 70	Preinsulated Lug	○
CPTAU 95	Preinsulated Lug	●



**Pre Insulated Joints Type**

Model No.	Cable Size (mm <sup>2</sup> )	Plastic sleeve Diameter (mm)	Length (kgs)
HWLG 16/16	16/16	20	98.5
HWLG 25/25	25/25	20	98.5
HWLG 35/35	35/35	20	98.5
HWLG 50/50	50/50	20	98.5
HWLG 70/70	70/70	20	98.5
HWLG 95/95	95/95	20	98.5



**Strap 100FT.Roll (30.5m)**

Model No.	Width		Thickness		Weight	
	Inch	mm	Inch	mm	Lbs	Kg
C314D	1/4	6.40	0.028	0.7	2.42	1.10
C338D	3/8	9.50			3.52	1.60
C312D	1/2	12.7			4.07	1.85
C358D	5/8	16.0			5.64	2.56
C334D	3/4	19.0			7.40	3.36



**Stainless Buckles**

Model No.	Width		Weight		Material
	Inch	mm	Lbs	Kg	
SSB14	1/4	6.40	0.3	0.1	#304,#316,#201
SSB38	3/8	9.50	0.8	0.4	
SSB12	1/2	12.7	2.1	1.0	
SSB58	5/8	16.0	2.4	1.1	
SSB34	3/4	19.0	3.7	1.7	



**Cable Jointing Products**

Model No.		
1001	11kV Compound filled Cast Iron Joint Cable	16-70mm
1002	11kV Compound filled Cast Iron Joint Cable	95-50mm
1003	11kV Compound filled Cast Iron Joint Cable	185-00mm
ELMP	Compound for Cast Iron Joints, 12.7kg tin 15kV max	1.5-4mm
P 0	Low Voltage Duracast Joint Cable	4-10mm
P 1	Low Voltage Duracast Joint Cable	10-16mm
P 2	Low Voltage Duracast Joint Cable	16-35mm
P 2.5	Low Voltage Duracast Joint Cable	35-50mm
P 3	Low Voltage Duracast Joint Cable	50-95mm
P 3.5	Low Voltage Duracast Joint Cable	95-150mm
P 4	Low Voltage Duracast Joint Cable	150-300mm
P 5	Low Voltage Heatshrink Joint Cable	1.5-2.5mm
SJ4/1.5-2.5	Low Voltage Heatshrink Joint Cable	4-6mm
SJ4/4-6	Low Voltage Heatshrink Joint Cable	10-16mm
SJ4/25-50	Low Voltage Heatshrink Joint Cable	25-50mm
SJ4/70-150	Low Voltage Heatshrink Joint Cable	70-150mm
SJ4/185-300	Low Voltage Heatshrink Joint Cable	185-300mm



**Cable End Caps**

Model No.			
102L022	End Cap	Cable	1.5-6mm
102L033	End Cap	Cable	4-35mm
102L044	End Cap	Cable	35-120mm
102L048	End Cap	Cable	120-240mm
102L055	End Cap	Cable	300mm

**Cable End Caps**

Model No.			
302K333	2 Core Break Out Boot	Cable	1.5-25mm
502K033	4 Core Break Out Boot	Cable	4-25mm
502K046	4 Core Break Out Boot	Cable	35-50mm
502K016	4 Core Break Out Boot	Cable	70-150mm
502K026	4 Core Break Out Boot	Cable	185-300mm



**17.5kV Straight Insulation Boots**

Model No.		
EAKT 1505	Straight Boot Set 16-35mm-Individual Boot	Code 207R045
EAKT 1506	Straight Boot Set 50-95mm-Individual Boot	Code 207R055
EAKT 1507	Straight Boot Set 120-300mm-Individual Boot	Code 207R065



**17.5kV Right Angle Insulation Boots**

Model No.		
EAKT 1508	Right Angle Boot Set 16-35mm-Individual Boot	Code 227R046
EAKT 1509	Right Angle Boot Set 50-95mm-Individual Boot	Code 227R056
EAKT 1510	Right Angle Boot Set 120-300mm-Individual Boot	Code 227R066



**11kV Heatshrink Indoor Terminations for PILC and XLPE Cable**

Model No.		
EPKT17A3MIH1	PILC Indoor Termination	16-25mm
EPKT17B3MIH1	PILC Indoor Termination	35-70mm
EPKT17C3MIH1	PILC Indoor Termination	95-240mm
EPKT17D3MIH1	PILC Indoor Termination	300-400mm
EPKT17A3XIH1/G55	XLPE Indoor Termination	16-25mm
EPKT17B3XIH1/G56	XLPE Indoor Termination	35-70mm
EPKT17C3XIH1/G57	XLPE Indoor Termination	95-240mm



**11kV Heatshrink Outdoor Terminations for PILC and XLPE Cable**

Model No.		
EPKT17A3MOH2	PILC Outdoor Termination	16-25mm
EPKT17B3MOH2	PILC Outdoor Termination	35-70mm
EPKT17C3MOH2	PILC Outdoor Termination	95-240mm
EPKT17D3MOH2	PILC Outdoor Termination	300-400mm
EPKT17A3XOH2/G55	XLPE Outdoor Termination	16-25mm
EPKT17B3XOH2/G56	XLPE Outdoor Termination	35-70mm
EPKT17C3XOH2/G57	XLPE Outdoor Termination	95-240mm





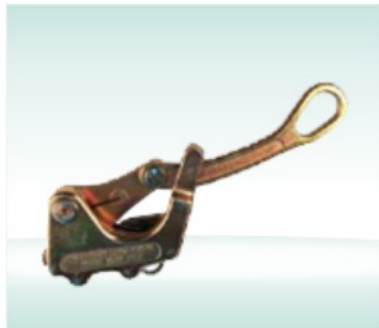
**Telescopic Link Stick (Fibreglass)**

Model No.	Description	Length
SJ9	Telescopic Link Stick	9 meter extended
SJ11	Telescopic Link Stick	11 meter extended



**Ratchet Lever Hoists**

Model No.	Capacity	Lifting Height	Weight
750Kg	3 Mtr lifting height	weght/5.5Kg	
1500Kg	3 Mtr lifting height	weght/9.6Kg	
3000Kg	3 Mtr lifting height	weght/16Kg	



**Conductor Grips (Come-along clamp)**

Model No.	Range	SWL
1685-20 Bare conductor grip	4.00mm to 22.00mm	SWL 2045kg
1656-30 Bare conductor grip	7.87mm to 13.46mm	SWL 2041kg
1656-40 Bare conductor grip	13.46mm to 18.80mm	SWL 3629kg
1656-50 Bare conductor grip	18.80mm to 21.84mm	SWL 3629kg
1656-60 Bare conductor grip	21.84mm to 24.38mm	SWL 3629kg
1674-74 Bare conductor grip	5.54mm to 13.97mm	SWL 3629kg



**Running Out Block/Pulley**

Model No.	Material	Description
	Die Cast Aluminium	Abc Conductor Running Out Block



**Linesman Safety Harness**

Model No.	Material	Description
	Polypropylene Webbing	Double Lynyard Sabs Approved



**Linesman Safety Belt**

Model No.	Material	Description
	Polypropylene Webbing	Double Lynyard Sabs Approved



**Insulating Rubber Gloves**

Model No.	Size
CG-10 Rubber Glove 1000V	Size 8,9,10 and 11
CG-15 Rubber Glove 7500V	Size 8,9,10 and 11
CG-20 Rubber Glove 17000V	Size 8,9,10 and 11
CG-30 Rubber Glove 26500V	Size 8,9,10 and 11



**Portable Earthing Equipment**

CER-Control Earth Kit Reticulation (Red) 1-33kV	WER-Working Earth Kit Reticulation (Yellow) 1-33kV
2 x 2mt 40mm copper leads with snap on both sides 1 x 12mt 40mm flexible copper lead with snap on clamps & earth clamp 1 x Cluster head 1 x Heavy duty carry bag	4 x 2mt 16mm flexible copper leads with snap on clamps on both sides 2 x 10mt 16mm flexible copper leads with snap on clamps & earth clamps 1 x 4mt 16mm flexible copper lead with earth clamps on both sides 1 x Cluster bar 1 x Cluster head 1 x Heavy duty bag



**Overhead Line Steelwork**

Model No.	Description	Dimensions
LGAF-D2154	A Frame Intermediate Standard	1240mm x 1000mm
LGAF-D3154	A Frame Intermediate Large	1500mm x 1000mm
LGAF-D2155	A Frame Strain Standard	1240mm x 1000mm
LGAF-D3155	A Frame Strain Large	1500mm x 1000mm



**Overhead Line Steelwork**

Model No.	Description	Dimensions
LGCRA-1.3M	Cross Arm Channel	1300 x 100 x 50mm
LGCRA-2.0M	Cross Arm Channel	2000 x 100 x 50mm
LGCRA-D3001	Cross Arm Intermediate	2000 x 90 x 65mm
LGCRA-D3000	Cross Arm Channel	2400 x 100 x 50mm
LGCRA-D3022	Meter Box Bracket	2400 x 50 x 5mm
LGCRA-D3027	Cross Arm Channel	1300 x 160 x 65mm



**Overhead Line Steelwork**

Model No.	Description	Dimensions
LGSA-D3035	Soil Anchor Assembly	380 x 220 x 70mm
LGSB-D3150	Strut Pole Bracket	720 x 60 x 10mm
LGSB-D3150	Swivel Strut Pole Bracket Assembly	
LGSLB-300	Streetlight Bracket	300mm Long 42mm dia
LGSLB-500	Streetlight Bracket	500mm Long 42mm dia



Accessories



SOL-1



SOL-2



SOL-3



SOL-4



SOL-5



SOL-6



SOL-7



SOL-8



SOL-9



SOL-10



SOL-11



SOL-12



SOL-13



SOL-14



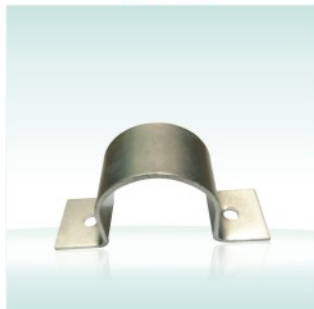
SOL-15



SOL-16



SOL-17



SOL-18



SOL-19



SOL-20